

# NMD-530 Series

## CONVEYOR TYPE METAL DETECTOR



NMD530 Series(SEEKER) Conveyor type metal detector is the most widely demanded model among NMD530 Series range products. Offering multi frequency operation system which is able to auto-select the correct operating frequency for maximum contaminant sensitivity in seconds. No longer are operators required to manually optimize frequencies, which is both time consuming and risky.

Complemented by an array of innovative features and advantages, NMD530 Series (SEEKER) Conveyor type metal detector delivers tangible benefits to the manufactures at every key stage in their process and is equally effective in both "wet" and "dry" application.

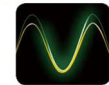


- Multi-Frequency Operation**
- Full Color Touch Screen (7 inch TFT LCD)**
- User-Friendly Operating System**
- Phase-Tracking Function**
- Digital Signal Processing (32-Bit Microprocessor)**
- Auto-Setting Function**
- Powerful Durability (IP66)**
- Smart Self-Diagnosis**
- USB Port for Data Management**
- RS232C & 485 Data Link Ports**
- Security System (3-Level Password)**
- Metal Detecting History Management**
- Easy Software Upgrade**
- Variable Languages Option**

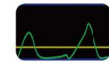
### High Performance for Metal Detection

- > Closed Coil System for perfect detection
- > High quality filter for more precise detection
- > Auto absorption function for vibration, impact, noise and etc.,
- > Dust Proof & Water Proof Standard (IP66) authentication


### Multi Frequency Operation

- 
- > Supporting multi frequency operation mode that can measure various types of products with the correct operating frequency for maximum contaminant sensitivity in seconds


### Phase Tracking Function

- 
- > Optimum detecting level is maintained by automatically coping with products of which phase is changed minutely, so detection is rather difficult such as frozen food.

### Full Color Touch Screen (7 inch TFT LCD)

- 
- > An intuitive and convenient full color touch screen, containing regional languages and user manual




### Digital Signal Processing Function

- 
- > The adoption of 32-bit microprocessor has added more precise operation and performance of the equipment. Software filter technology to remove ambient noise affecting performance of a metal detector has been applied.

### Exterior Design considering the convenience and aesthetics

- > Modern and sensuous design in which both convenience and beauty are emphasized at the same time

### Connectivity to External Devices

- 
- > Backing up inspection history and etc., by using a USB removable disk and reviewing the data on a PC.
- 
- > Monitoring real-time operating status for multiple metal detectors through the connective access to LAN.
- 
- > Interlocking the machine to various typed external devices through RS232C & 485 port.

### Auto-Setting Function of the Inspection Items

- > Auto-setting the machine for a testing product with the most suitable values even for beginners

### Setting Function of a Variety of Items for Convenient Operation

- > Up to 100 kinds of products are registered with each different setting value for convenient operation.

### Manageable Metal Detecting History

- > Detection history by various classifications and periods (in a daily / weekly / monthly / period-specified way)
- > Data on detection history accessibility by LCD screen, USE disk and Printer (Optional).

## Application

General Food (Instant Food, Cookie/Bread, Kimchi, Vegetable, Tofu and etc.)



Sea Food (Frozen/Refrigerated Sea Food, Dried Fish and etc.)



Meat (Frozen/Refrigerated Meat, Other processed Meat and etc.)



General Industry (Rubber, Timber, Plastic, Chemical Resin, Raw Material Recycling and etc.)



# NMD-530 Series CONVEYOR TYPE METAL DETECTOR



## Easy Software Upgrade

- > Easy software upgradability by USB and touch screen whenever the latest version is available

## Password Setup Function

- > Setting up each three different passwords depending on each status (a user, an administrator and an engineer)

## External Output Printer Setup Function (Optional)

- > Additional option for installing an external output printer for detection history



## Selectable Conveyor Belts Type



- > Plastic Chain Modular Belt for oil or moisture resistance and no deformation or tension changes, impact and abrasion resistance.
- > Poly Urethane Belt for contacting bulk foods (FDA accreditation)

## Selectable Various Rejecting System

- > Standard Rejector (Belt Stops, Audible Alarm & Lamp)
- > Optional Rejectors (Flip Bar / Pusher on Belt / Pusher on Roller) (Air Blast / Dumper Chute) (Drop Flap / Slide Carrier)

\* Please refer to page #7 for more details about optional auto rejectors.

## Customizable Design

- > Extended / Inclined Conveyor
- > Super Wide Head Width (Max. 2,000mm) & Head Height (Max. 1,000mm)

### Outputs

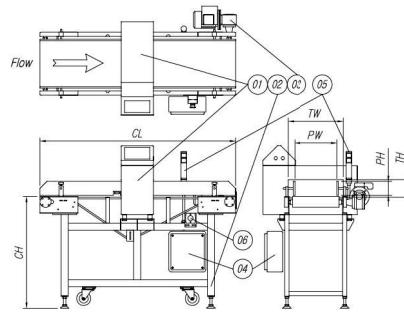
- > Relay (5A) / 1A1B 2EA, DC24V SOL, AC220V 0.2A

### Power Supply

- > Single Phase (110 to 220V) & Three Phase (220 to 380V and etc.)
- > Free Cycle (50/60Hz) > Fuse (3A)

### Operating Temperature

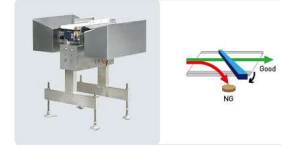
- > 0°C to 50°C (advised to use the machine under normal temperature)



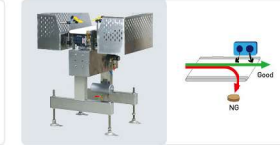
No	Description	Material
1	Metal Detector Head	SUS304
2	Conveyor Frame	SUS304
3	Motor	-
4	Power Box	SUS304
5	Tower Lamp	-
6	Emergency Switch	-

## Auto Rejectors Available as option

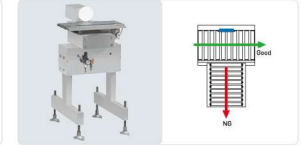
**Flip Bar**  
For small sized (100~250mm) and light weighted (up to 6.0 kg) products  
For relatively high-thickness products



**Air Blast**  
For small and light weighted (Max. 0.6kg) products moving in a high speed



**Pusher on Belt**  
For relatively light weighted (Max 0.6 kg) products



**Pusher on Roller**  
For relatively heavy weighted (Max 30.0 kg) products contained in a box



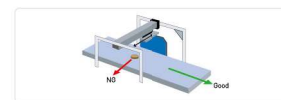
**Slide Carrier**  
For light weighted (about 0.6 kg) products contained in a tray, a cup and a bag.



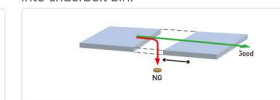
**Drop Belt**  
For relatively light weighted (Max. 6.0 kg) and low-thickness products in a limited site



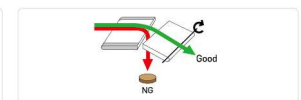
**Roadless**  
For long shaped products



**Retracting Conveyor**  
Retracting belt device depositions products into underbelt bin.



**Dumper Chute**  
For products transferred in bulk



## Specification

Standard Specification	NMD 530 2010	N/D 530 2015	NMD 530 2020	NMD 530 2025	NMD 530 2030	NMD 530 2510	N/D 530 2515	NMD 530 2520	NMD 530 2525	NMD 530 2530	NMD 530 3010	NMD 530 3015	NMD 530 3020	NMD 530 3025	NMD 530 3030	NMD 530 3510	NMD 530 3515	NMD 530 3520	NMD 530 3525	NMD 530 3530	
	<b>Tunnel Size</b>	200					250					300					350				
<b>Width (TW)</b>	100	150	200	250	300	100	150	200	250	300	100	150	200	250	300	100	150	200	250	300	
<b>Height (TH)</b>	100					150					200					250					
<b>Pressing Size</b>	150					200					250					300					
<b>Width (PW)</b>	70	120	170	220	270	70	120	170	220	270	70	120	170	220	270	70	120	170	220	270	
<b>Height (PH)</b>	0.5	0.5	0.8	0.8	1.0	0.5	0.8	0.8	1.0	1.0	0.5	0.8	0.8	1.0	1.2	0.5	0.8	1.0	1.0	1.2	
<b>Estimated *1 Sensitivity</b>	SUS304					0.8					1.0					1.5					
<b>Conveyor Length (CL)</b>	1,000 ~ 2,000mm																				
<b>Conveyor Height (CH)</b>	500~1,500mm (+50 & -20mm)																				
<b>Conveyor Speed</b>	Fixed (22M/Min.) & Variable (Max. 44M/Min.)																				
<b>Standard Rejecting System</b>	Belt Stops, Audible Alarm & Lamp (Auto Rejector available as option)																				
<b>Preset Numbers</b>	100 items																				

\*1 Results of when test balls, Fe and SUS 304 were set at the center of belt surface under the highest frequency. Detection sensitivity depends on product shape, installation and environmental conditions

NMD 530 4010	NMD 530 4015	NMD 530 4020	NMD 530 4025	NMD 530 4030	NMD 530 4510	NMD 530 4515	NMD 530 4520	NMD 530 4525	NMD 530 4530	NMD 530 5010	NMD 530 5015	NMD 530 5020	NMD 530 5025	NMD 530 5030	NMD 530 5510	NMD 530 5515	NMD 530 5520	NMD 530 5525	NMD 530 5530	NMD 530 6010	NMD 530 6015	NMD 530 6020	NMD 530 6025	NMD 530 6030
400					450					500					550					600				
100	150	200	250	300	100	150	200	250	300	100	150	200	250	300	100	150	200	250	300	100	150	200	250	300
350					400					450					500					550				
70	120	170	220	270	70	120	170	220	270	70	120	170	220	270	70	120	170	220	270	70	120	170	220	270
0.8	0.8	1.0	1.0	1.5	0.8	0.8	1.0	1.2	1.5	0.8	0.8	1.0	1.2	1.5	0.8	0.8	1.0	1.5	1.5	0.8	0.8	1.0	1.5	1.5
1.0	1.2	1.5	1.5	2.0	1.0	1.2	1.5	1.5	2.0	1.0	1.2	1.5	1.5	2.0	1.0	1.2	1.5	2.0	2.0	1.0	1.2	1.5	2.0	2.0
1,000 ~ 2,000mm																								
500~1,500mm (+50 & -20mm)																								
Fixed (22M/Min.) & Variable (Max. 44M/Min.)																								
Belt Stops, Audible Alarm & Lamp (Auto Rejector available as option)																								
100 items																								